



**SPRAYS ON.**  
**STOPS EROSION.**





# ABOUT

Developed by pioneering Australian soil scientist over 12+ years, the EnviroStraw range of products are proven to control erosion, revitalise soil and establish native vegetation anywhere.

Even the most erosion-prone and depleted commercial sites can be revegetated in a self-sustaining way using our products, which contain built-in nutrients for sustainable growth and work faster than traditional methods.

EnviroStraw products are Australian-owned and manufactured. Our revegetation products have been carefully developed to accommodate all land sloping variants.





# INTRODUCING GEOSPRAY

## AN ENVIROSTRAW PRODUCT



### What is GeoSpray?

GeoSpray is an alternative to geotextile products that eliminates erosion caused by water, rain or wind. Using a signature spray-on application technique, GeoSpray removes the labour-intensive, time-consuming and costly aspects of laying geofabric and other TRM products while exceeding all industry specifications.

After application, GeoSpray forms a non-flammable crust that holds the substrate underneath in place, reducing the risk of contamination to nearby storm water drains and creeks.

A proprietary blend of minerals, interlocking fibres and speciality binders adhere GeoSpray to the substrate, forming a tough, resilient and flexible cover. This durable cover can move with the ground below, minimising cracking.

**GeoSpray Original is porous and binds safely with the substrate, giving it the following advantages:**

- It is unaffected by the high winds that dislodge and tear geotextile products
- It can handle storms and rain events because water drains through it
- It can be vegetated, eliminating the need for Jute matting and other TRM technology
- It requires no maintenance.

**GeoSpray Extreme does not allow for water penetration, making it ideal for.**

1. Highly dispersive soils
2. Extreme weather events
3. Extreme slopes
4. Clean water drains
5. As a sediment dam liner

**GeoSpray works well on all substrates, including:**

- Compacted clay
- Sandy loam
- Rock
- Dispersive soils
- Sand

GeoSpray is applied using standard HydroSeeding equipment. Unlike geotextile and other TRM solutions, it is applied in minutes, not hours. It dries quickly and can withstand moderate rain events in as little as 4 hours after application.

### GeoSpray benefits



**Cost effective**



**Quick application**



**Can be vegetated**



**No handling heavy rolls of geotextile**



**Not impacted by high winds**



**Handles severe storm events**



**Can be left on site after job completion**



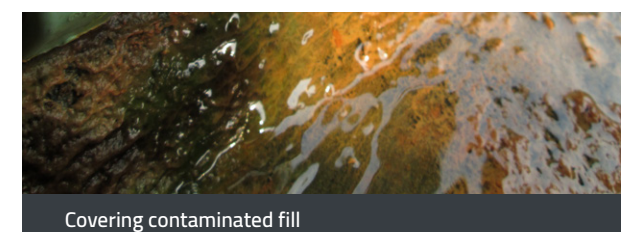
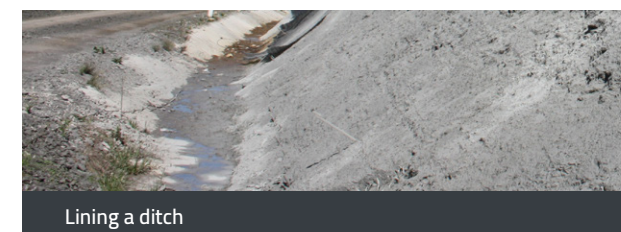
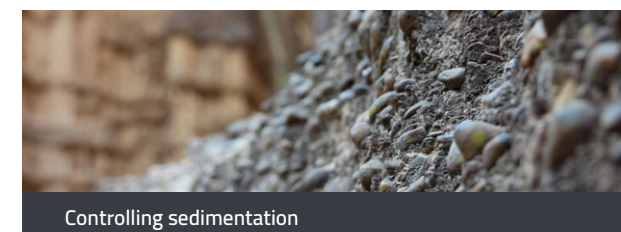
**Can be applied to hydroseeded areas**



**Australian designed and manufactured**

# THE MANY USES OF GEOSPRAY

GeoSpray can be used to control erosion in a vast array of situations. Common applications include:



### Compliance assured

Geospray meets or exceeds all relevant transport and main roads specifications, including:

- MRSR2 – regarding erosion and sediment control
- 1237P – regarding geobinders (non-toxic material or substance sprayed on to soils to prevent erosion)
- 1345P – regarding erosion control blanket (products reduce impact of raindrops and low-velocity flow).

### Unrivalled flexibility

Because GeoSpray can be applied using hydroseeding equipment, our GeoSpray contractors are able to access difficult-to-reach places.



# CASE STUDY #1

## Hawkesbury Road, Moggill, QLD

### Description

In November 2012, we commissioned an independent field test at Hawkesbury Road, Moggill. At the time, we did not know that Cyclone Oswald was on its way.

The site had experienced erosion for several years. The substrate was a combination of soft sand, sand stone and rock.

GeoSpray was applied to the surface six weeks before Cyclone Oswald hit, which caused extensive damage to the area and severe flooding in the Brisbane region.

### Result

The area received more than 400mm of rain over a 24-hour period. GeoSpray held fast and prevented soil erosion. The grassed areas experienced a significant level of water run-off flowing over the GeoSpray-stabilised area.

***And yet, GeoSpray did not crack or lift.***

The highly bonded fibre matrix of the coating had little or no visible sign of delamination. Adhesion to the substrate was exceptionally good.

The residual porosity was sufficient to prevent build-up of hydraulic pressure from water trapped in the bank, and effective fibre-bonding prevented scouring by surface flow.



November 2012



Post-Cyclone Oswald: January 2013



Little or no sign of delamination

# CASE STUDY #2

## Berrimah Business Park, Northern Territory

### Description

Located just off Stuart Highway in front of the Berrimah Business Park, this site is the run-off drain from the highway. There was no vegetation at all on the site when the project began.

The EnviroStraw solution involved applying GeoSpray plus grassing at an application rate of 1.5:1 to prevent erosion and washouts. At the time, the site was being irrigated three times per day for 15 minutes.

### Result

Even with the heavy irrigation in place, the GeoSpray membrane held fast. None of the product washed away and the grass grew in thickly. To this day, it remains plush and well established.



Immediately after application



One month after application



Two months after application

# WHO USES GEOSPRAY?

## Independently tested

*"Water in the GeoSpray-treated drain was clear of sediment for the duration of the test. In contrast, erosion was very evident where the drain terminated in bare soil at the near horizontal base of the track. The inherent permeability of GeoSpray was evident in the testing. Water draining through the GeoSpray coating slowed the advance of water down the drain. The wetted area could be depressed by foot pressure without damage to the coating."*

**Independent Analyst Druce Batstone B.Sc. (APP), B.E., PHD.**

## Our clients



Transport  
for NSW

**BIELBY**  
Holdings Pty Ltd



**ANGLO  
AMERICAN**

**SEYMOUR  
WHYTE**



## Certified GeoSpray installers

GeoSpray works with a network of certified installers throughout Australia.

## GeoSpray is now available worldwide

For more information, please contact our sales team:

0409 677 449

[sales@geospray.com.au](mailto:sales@geospray.com.au)

[geospray.com.au](http://geospray.com.au)

Developed in the lab, validated in the field

