



**EnviroStraw**<sup>TM</sup>  
PROVEN REVEGETATION SOLUTIONS



# CARBON PLUS

A better way to build essential  
carbon in soil.



[envirostraw.com.au](http://envirostraw.com.au)





# CARBON PLUS



**EnviroStraw™**  
CARBON PLUS

## A better way to build essential carbon in soil.

Carbon Plus leverages a unique combination of volcanic rock dust (minerals), humic compounds (organics), carbon and microbiological elements to increase carbon levels in soil.

Research indicates that combining these components kick-starts the process of creating topsoil. Replenishing minerals and introducing beneficial soil bacteria produces healthy vegetation (biomass) and improved vegetative cover. Healthy biomass further improves soil structure by reducing erosion and providing the necessary organics to successfully generate plant life.

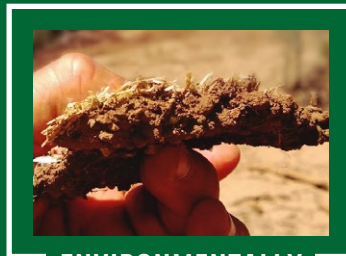
Carbon Plus is the carbon link that creates a conduit for nutrient delivery from soil to plant – a link that's essential for nutrient transfer. With disturbed soils, ecological balance cannot be restored without carbon linking. Carbon Plus facilitates this linkage, making it the ideal, self-sustaining alternative to repeatedly applying low-grade compost.



Supplied in 25kg bags or bulk minimum quantity required.



**AUSTRALIAN  
MANUFACTURED**



**ENVIRONMENTALLY  
RESPONSIBLE**



**MAXIMUM WATER  
USE EFFICIENCY**

## Why you need Carbon Plus

- ✓ Works in all soil types
- ✓ Particularly suited to nutrient-deficient soils low in organic carbon
- ✓ Increases the efficiency of both organic and inorganic fertilisers
- ✓ Contains soil-building bacteria and fungi
- ✓ Contains humates high in humic and fulvic acids.



# CARBON PLUS



## APPLICATION GUIDELINES

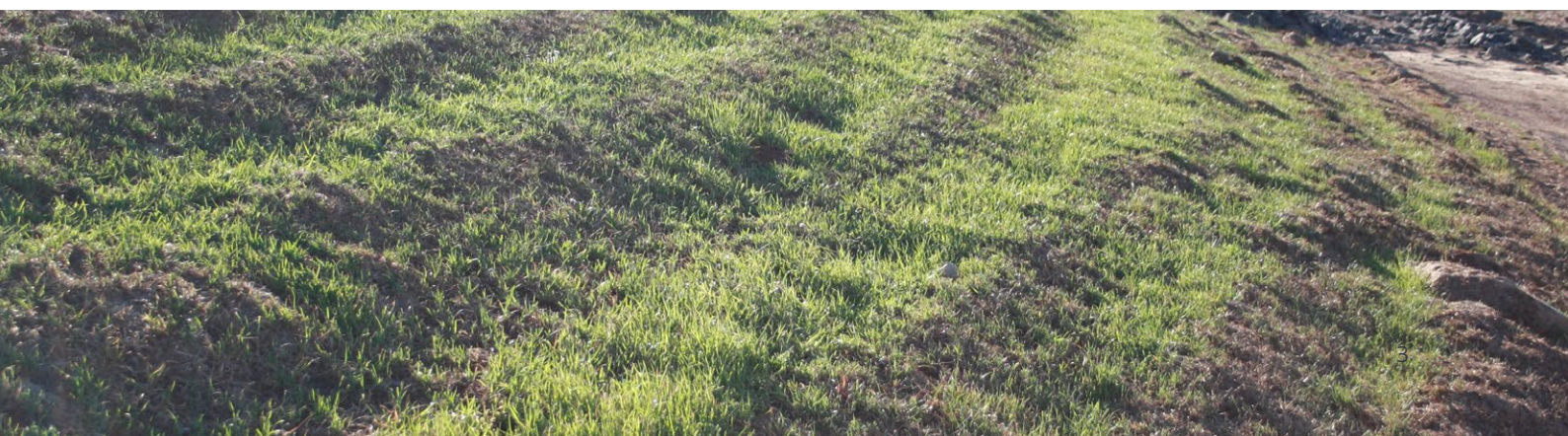
1. Can be applied using hydromulching equipment.
2. Mix for a minimum 15 minutes prior to application.
3. Apply a minimum of 1 litre per m<sup>2</sup>.
4. Can be applied with seed/fertiliser and in the hydromulch slurry.

**Carbon Plus** leverages a unique combination of volcanic rock dust (minerals), humic compounds (organics), carbon and microbiological elements to increase carbon levels in soil.

## APPLICATION CONSIDERATIONS

SOIL TYPE	APPLICATION RATE IN KG PER HECTARE
Sand/loam	500
Sandy/silt loam	400
Clay/loamy clay	300
Loam	250

\*Rates are a guide only, for best results determine the application via soil test data.





For more information, please contact our sales department.

**1300 868 669**

[sales@envirostraw.com.au](mailto:sales@envirostraw.com.au)

[envirostraw.com.au](http://envirostraw.com.au)



## WARRANTY

EnviroStraw Pty Ltd warrants that its products are free from defects and will perform as stated in this literature. If our product does not meet product specifications, notice of failure must be received within 7 days of failure. EnviroStraw Pty Ltd will not warrant that the product will perform under unlimited circumstances that are caused by soil conditions, installation, and/or weather variables.