



**EnviroStraw™**  
PROVEN REVEGETATION SOLUTIONS



# ENVIROSTRAW BFM

Achieve rapid germination with up to 6 months  
erosion control with our Bonded Fibre Matrix.



[envirostraw.com.au](http://envirostraw.com.au)



# ENVIROSTRAW BFM



**EnviroStraw™  
BFM**

Achieve rapid germination with up to 6 months erosion control with our Bonded Fibre Matrix.

Manufactured in Australia, EnviroStraw BFM is a hydraulically-applied, 100% biodegradable Bonded Fibre Matrix (BFM) composed of a natural, plant-derived fibre that's been thermally processed.

EnviroStraw BFM includes a suite of microbes and a soil conditioner meeting AS4454-2012 standard. The combination of polymers features naturally derived hydrocolloid biopolymers and organic water absorbents. After application and curing time, the product forms a bond with the soil surface to create a porous, absorbent and flexible erosion-resistant mulch matrix that continuously allows for rapid germination and plant growth proving up to six months observed functional longevity.



**Supplied in 20kg bags (52 bags per pallet). Bags are UV and weather-resistant. Pallets are stretch-wrapped in a UV and weather-resistant cover.**



**AUSTRALIAN  
MANUFACTURED**



**100%  
BIODEGRADABLE**



**MAXIMUM WATER  
USE EFFICIENCY**



**AUSTRALIAN  
RENEWABLE RESOURCES**

## Why you need EnviroStraw BFM

- ✓ Mix up to 50% more mulch fibre per tank
- ✓ Increased coverage area with every tank applied
- ✓ Delivers uniquely reliable and consistent results
- ✓ Significant water saving providing CO2 reductions with water cart movements
- ✓ Features a suite of 22 beneficial bacteria and fungi selected for disturbed soils.



# ENVIROSTRAW BFM



## APPLICATION GUIDELINES

To ensure proper application rates, measure and clearly mark area. For maximum performance, apply BFM in a two-step process from different directions:

- 1. Pass one:** Apply fertiliser with specified prescriptive agronomic formulations and 50% of the cover crop seed including all Native seeds to be included with EnviroStraw BFM over the measured area.
- 2. Pass two:** Mix balance of seed and apply EnviroStraw BFM ensuring all shadowing is eliminated and 100% ground cover is achieved.
- 3.** Depending upon site conditions, BFM may be applied in a one-step process where all components may be mixed in a single tank load. Best results and more rapid curing times are achieved at temperatures exceeding (15°C). Curing times may be accelerated in high temperature, low humidity conditions with product applied on dry soils.

**C-factor:** 0.008 for 100% ground cover on a 30 % slope angle 150mm rain event.

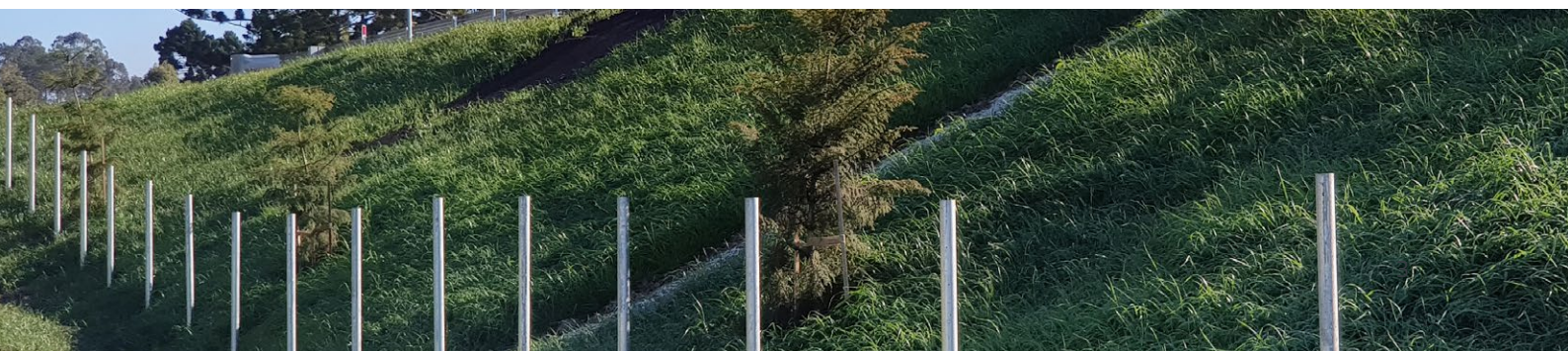
Always consider local weather patterns, correct seed bed preparation and always perform soil testing prior to application by a qualified soil specialist.

## APPLICATION CONSIDERATIONS

SLOPE GRADIENT	APPLICATION RATE IN KGS PER HECTARE
> 4H -1V & < 3H - 1V	3000kg
> 3H -1V & < 2H - 1V	3500kg
> 2H -1V & < 1H - 1V	4500kg
Below ECB or TRM	2500kg
As infill for TRM**	4000kg

\* Rates are a guide only on-site conditions should be considered to determine the appropriate application rate always consider rainfall wind velocity, slope angle soil type and seed bed preparation. Typically, slow wetting soil types clays for example and slopes with not the ideal seed bed preparation increased application rates are recommended.

\*\* Use only approved and tested TRMs





For more information, please contact our sales department.

**1300 868 669**

**[sales@envirostraw.com.au](mailto:sales@envirostraw.com.au)**

**[envirostraw.com.au](http://envirostraw.com.au)**



## WARRANTY

EnviroStraw Pty Ltd warrants that its products are free from defects and will perform as stated in this literature. If our product does not meet product specifications, notice of failure must be received within 7 days of failure. EnviroStraw Pty Ltd will not warrant that the product will perform under unlimited circumstances that are caused by soil conditions, installation, and/or weather variables.